

(As of March 31, 2020)

Corporate Data

Corporate name: Hitachi Transport System, Ltd.
Head office: 2-9-2, Kyobashi, Chuo-ku, Tokyo, Japan
Founded: February 1950 (Established: August 1959)
Paid-in capital: ¥16,802 million

Main businesses:

- 3PL Business [integrated logistics services for corporate customers] (Logistics System Building, Information Control, Inventory Control, Orders Control, Processing for Distribution, Logistics Center Operation, Factory Logistics, Transportation, Customs Clearance, International Nonstop Delivery through Land/Ocean/Air Transportation)
- Transportation, Installation and Setting of General Cargo, Heavy Machineries, and Artworks
- Factory and Office Moving
- Warehousing and Trunk Room Services
- Collection and Transportation of Industrial Waste
- Logistics Consulting, etc.

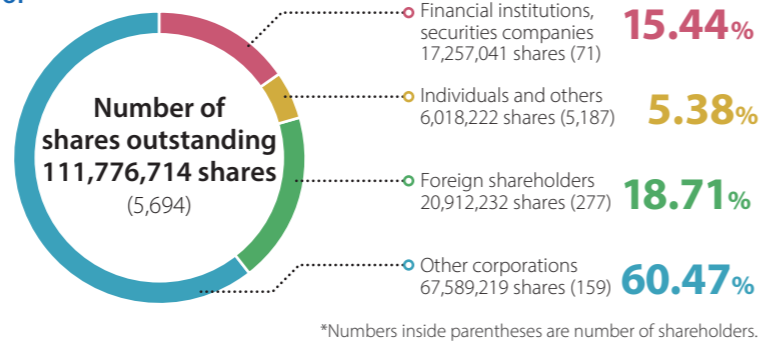
Stock Information

Stock Exchange
 First Section of Tokyo
 Securities Code: TSE-9086

Number of shares outstanding
 111,776,714 shares

Number of shares per unit
 100 shares

Composition of shareholders

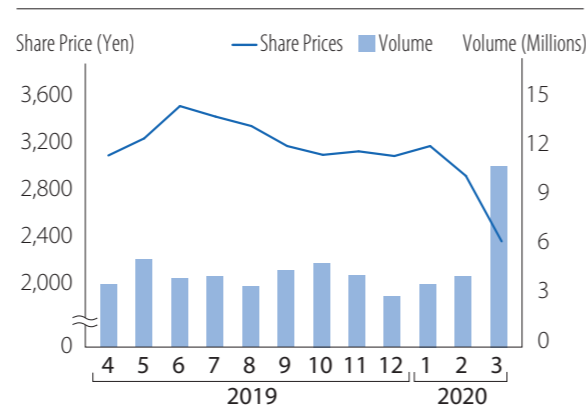


Major shareholders (top 10)

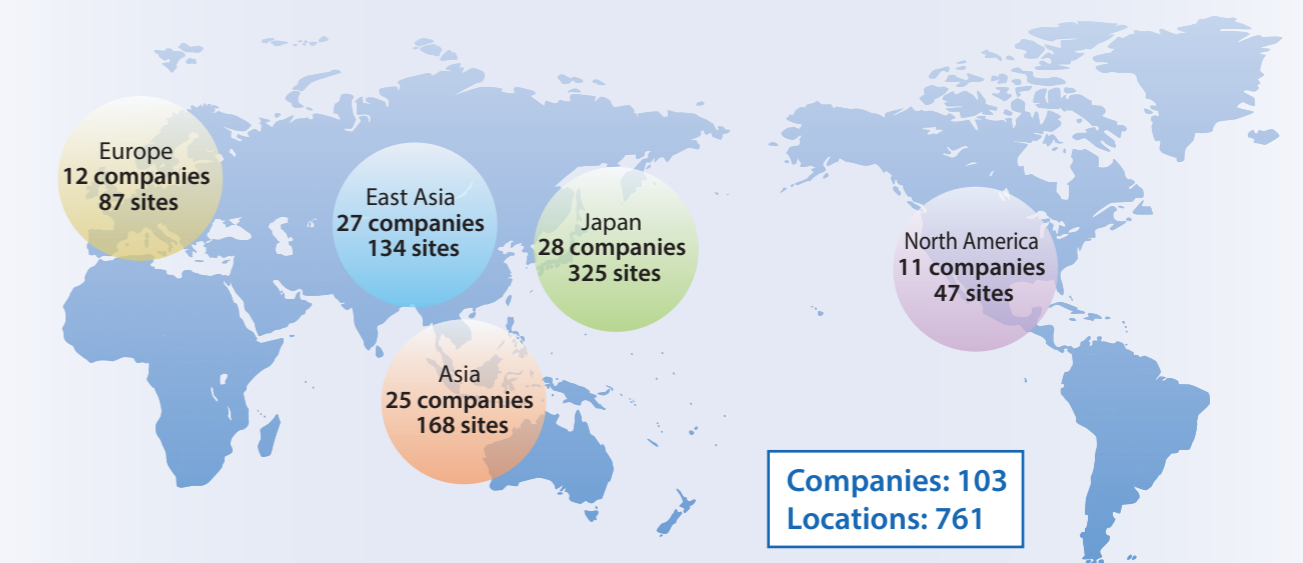
Name of shareholder	Number of shares held (thousands)	Percentage of shares held
Hitachi, Ltd.	33,471	30.01 %
SG Holdings Co., Ltd.	32,349	29.00
The Master Trust Bank of Japan, Ltd. (Trust Account)	3,582	3.21
Japan Trustee Services Bank, Ltd. (Trust Account)	3,043	2.73
National Mutual Insurance Federation of Agricultural Cooperatives	2,733	2.45
State Street Bank and Trust Company 510312	2,364	2.12
State Street Bank and Trust Company 510311	2,015	1.81
MSIP CLIENT SECURITIES	1,536	1.38
Japan Trustee Services Bank, Ltd. (Trust Account 9)	1,384	1.24
Hitachi Transport System, Ltd. Employees' Shareholding Association	1,310	1.17

Note: The percentage of shares held is calculated based on the number of shares excluding treasury stock (227,790 shares).

Changes in share price (as of the end of the month) and volume



Network Extending to 29 Countries and Regions



*Number of companies includes associates accounted for using the equity method.
 *Number of sites excludes SAGAWA EXPRESS Group, AIT Group, and HTB-BCD Travel Group

External Rating and Evaluation

Rating information

Rating agency: **Rating and Investment Information, Inc. (R&I)**

Rating: **Issuer rating: A** Rating outlook: **Stable**

ESG evaluations

2020 CONSTITUENT MSCI JAPAN ESG SELECT LEADERS INDEX

2020 CONSTITUENT MSCI JAPAN EMPOWERING WOMEN INDEX (WIN)

S&P/JPX Carbon Efficient Index

IR website evaluations

企業ホームページ最優秀サイト 2019 日興アイ・アール総合ランキング

Corporate Websites "AAA Website" (2019) Nikko Investor Relations Ranking in all listed companies in Japan

Gomez IR Site Ranking 2019 銀賞

IR Site Overall Ranking "Silver Award" (2019) Gomez

Internet IR 優良賞 2019 Daiwa Investor Relations

Internet IR "Excellence Award" (2019) Daiwa Investor Relations