

News Release

September 22, 2022

The Japan Packaging Contest 2022: HTS Received "Logistics Award" and "Electrical Equipment Packaging Award"

Hitachi Transport System, Ltd. is pleased to announce that our "Change of shipping box for steam turbine blades" won Logistics award, and our "The electrical trolley package made of only corrugated board" won the Electrical equipment packaging award at the Japan Packaging Contest 2022 held by the Japan Packaging Institute.

1. Logistics award: Change of shipping box for steam turbine blades

Conventional wooden box package has issues in terms of cost and work efficiency: the higher the package weight, the higher the transportation cost. Also, it takes many workers and time to pack and unpack. Then, we changed the specifications that a reinforced carton box placed on a wooden pallet, and covered with a cap after product storage.

The new style packaging reduces the work time required for packing and unpacking by 20% compared to the previous wooden box, and improved work efficiency. In addition, by changing most of the packaging materials to reinforced cardboard, we have reduced the packaging weight and transportation costs by 60%. Furthermore, we reduce CO₂ emissions when disposing of shipping boxes by 88%, realizing environmentally friendly packaging.



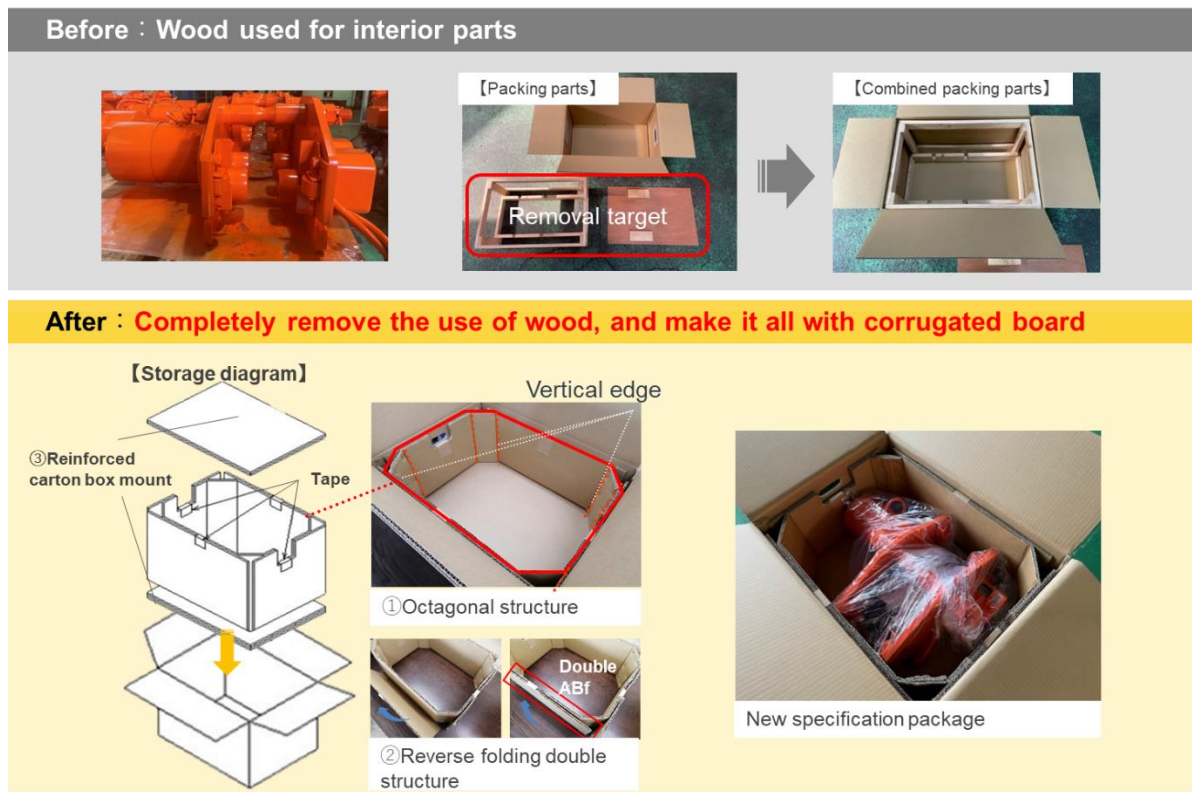
Comparison of before after improvement

2. Electrical equipment packaging award: The electrical trolley package made of only corrugated board

Previously we used corrugated board for the outer box and wood for the interior. From the perspective of reducing environmental impact, we have developed a packaging that does not use wood and uses all corrugated board. In changing everything to corrugated board, considering the weight of the product, the issue is to have the interior material the same function and strength as wood.

The four corners of the interior material have an octagonal structure to provide pressure resistance, and the lid of the corrugated board for the interior material is reverse-folded to create a double-layered that makes thicker to increase pressure resistance.

In addition, in order to prevent the bottom falls out when lifted, a reinforced corrugated board mount is used on the bottom to achieve the same function and strength as before. This all-corrugated board packaging cuts the amount of wood used by 100%, and cuts material costs by 20%.



Comparison of before after improvement

Under the business concept “LOGISTEED,” we aim to become the most preferred global supply chain solutions provider, and we strive to achieve new innovations by enhancing the core domain and expanding collaborative area across businesses and industries.

【Reference】

■HTS packaging solution

<https://www.hitachi-transportssystem.com/en/solution/packaging/>

End